

Disney and CAMERON MACKINTOSH's

MARY POPPINS

THE BROADWAY MUSICAL

©Disney/CML





DKCM

PRODUCERS OF LIVE ENTERTAINMENT • NEW ZEALAND

BRINGING WORLD-CLASS ENTERTAINMENT TO DUNEDIN

ONE WEDDING & A FUNERAL



A Bridezilla, a confused Groom, a frustrated Best Man, a F-A-B-U-LOUS Wedding Planner and you are a guest! - WHAT COULD POSSIBLY GO WRONG?

THE GREAT KIWIANA CHRISTMAS PARTY



Dress in anything that smacks of Kiwiana and get ready to party. A night packed with hilarious interactive Kiwi comedy, Kiwi music and Kiwiana!

FAULTY TOWERS DINNER SHOW



Back for its 6th consecutive year. A feast of nonstop, high energy, full of mayhem and madness comedy brilliance - see what over 30,000 people are raving about!

THE OTHER MRS BROWNZ BOYS



A dining experience full of unexpected surprises and outrageous interactive comedy. Hosted by Winnifred, Rory, Kicker and the lady herself - Agnes Brown!

DKCM'S INFAMOUS STAFF CHRISTMAS PARTIES TOURING TO A VENUE NEAR YOU THIS NOVEMBER & DECEMBER 2017!

BOOK NOW AT WWW.DKCM.CO.NZ

**The Taieri Musical & DKCM
Production of**

Disney and CAMERON MACKINTOSH's

MARY POPPINS

THE BROADWAY MUSICAL

©Disney/CML

A Musical based on the stories of P.L. Travers
and the Walt Disney Film

Original Music and Lyrics by
Richard M. Sherman and Robert B. Sherman

Book by
Julian Fellowes

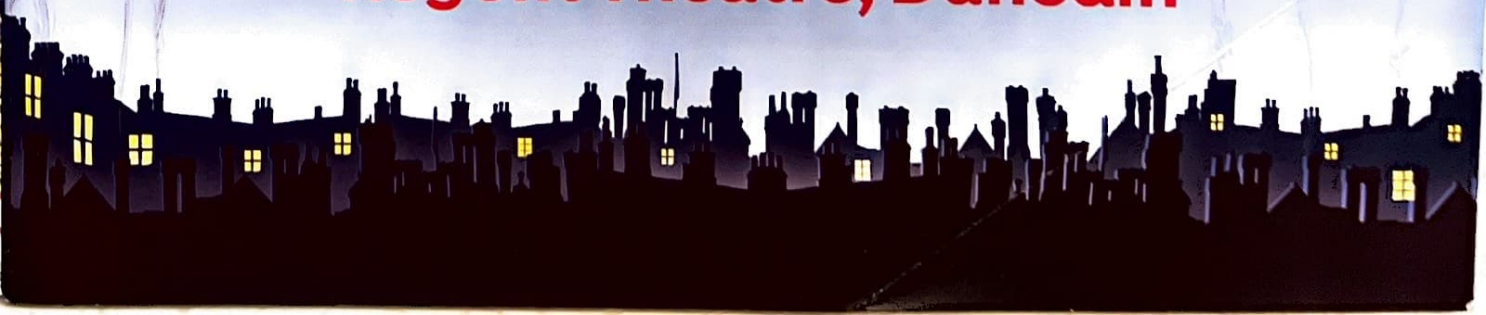
New Songs and Additional Music and Lyrics by
George Stiles and Anthony Drewe

Co-Created by
Cameron Mackintosh

Originally Produced by
Cameron Mackintosh
and **Thomas Schumacher** for Disney

By arrangement with Hal Leonard Australia Pty Ltd, Exclusive agent for Music Theatre
International (NY)

18-27 May 2017
Regent Theatre, Dunedin

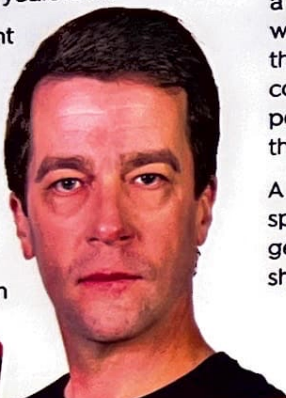


"Like something is brewing, about to begin . . ."

From the first moment two years ago when we made the decision with DKCM Ltd to bring *Mary Poppins* to Dunedin, this beloved show has touched everyone involved with a sense of wonder and excitement.

Based upon the books by PL Travers, Walt Disney's 1964 movie about a magical nanny has become an indelible part of our collective memory, with a message about family and purpose that continues to resonate over 50 years later.

With that excitement comes a profound sense of responsibility, and we have been grateful for the assured hands of Doug Kamo, Emma Holloway and Michael Grant in



CHRIS HINCH TAIERI MUSICAL, PRESIDENT

bringing our shared vision to life.

We have a wonderful cast, and it is a privilege to watch such accomplished performers practise their craft. To our wonderful Janes and Michaels, you have worked tirelessly over the last six months, and it is humbling to see such young performers achieve so much.

We cannot deliver shows of this calibre without our hardworking committee and volunteers. Taieri Musical strives for a sense of family and respect in all that we do, and we appreciate the many thousands of hours that our volunteers contribute to make shows like this possible. We cannot do this without you – thank you, one and all.

A huge thankyou to our wonderful sponsors and the organisations that have generously provided grants to make shows like this possible.

To stage this particular show in such a historical venue has required a high level of careful planning and preparation, and we are immensely appreciative of the unwavering support from Regent Theatre and Heritage NZ.

As the new President of Taieri Musical, my sincere thanks to Tania Graham and Rowena Monson, who have provided unwavering support and guidance throughout this daunting process. They represent what I love most about Taieri Musical – the culture of generous, talented and caring people coming together to create genuine but fleeting moments of shared delight and wonder.

To our audience: Thank you for your support – without an audience, we have no show. We trust that you will enjoy the fruits of our labour, and with open hearts we welcome you to *Mary Poppins*!

"Daddy, I love Mary Poppins . . ."

Those were the words my then 4-year-old daughter said to me after taking her to see the Australian cast of *Mary Poppins* in Auckland four years ago. So, when the opportunity presented itself to produce this international hit, I knew I had a wonderful reason in my young children to make it happen.

This third collaboration with co-producers Taieri Musical began almost two years ago, and now, after 14 weeks of rehearsals,



DOUG KAMO DKCM LTD, PRODUCER

thousands of volunteer hours, the best family of local sponsors, trust funders and suppliers a producer could ask for, and a production team, crew and orchestra that would make any West End production stand up and take notice . . . we're here and you're about to witness this intoxicating adaptation of both Disney's film and Pamela Travers' books.

This is a show full of magical moments, incredible staging effects and stunning visuals, but it is the committed performances from an incredible cast, the outstanding choreography by Emma Holloway and stunning orchestrations being brought to life by Musical Director Michael Grant that give this production the heart it so richly deserves. I thank

them deeply for their brilliant creative contribution.

We have all heard the expression 'art imitating life', but never have I connected more to this expression than whilst directing *Mary Poppins*. Every rehearsal has served as a sobering reminder of my duty as a father and the importance of family first.

If you're not with a child tonight – buy another ticket and bring them along, the joy you'll get watching them I'm sure will be the same that I had watching my daughter 4 years ago . . . It is something I will never forget . . .

I hope our production has that same impact on you . . . enjoy!

History

Mary Poppins began life as a series of eight children's books, published over a 54-year period, from 1934-1988. The author was P.L. (Pamela Lyndon) Travers, who was born Helen Lyndon Goff in Maryborough, Queensland, in 1899, the oldest of three girls. Helen's father, Travers Robert Goff, was an alcoholic and unsuccessful bank manager, who was demoted to a bank clerk, and who died of influenza when Helen was 7. After her father's death, the family moved to Bowral, New South Wales, until 1917. In 1924, Helen left for England, never to return to Australia.

After a failed and short-lived attempt to become an actress, during which time she adopted her new stage name of Pamela Lyndon Travers, she turned to writing as P.L. Travers. The first *Mary Poppins* book, published in 1934, was Travers' first literary success and became an instant hit, attributed to its unusual mix of the everyday with the fantastical.

Walt Disney first attempted to purchase the film rights in 1938, but was rebuffed because Travers did not believe a film version would do justice to her creation. For more than 20 years, Disney

periodically made efforts to convince Travers to allow him to make a Poppins film. He finally succeeded in 1961, although Travers only conceded due to financial pressures, and insisted on many conditions, including script approval rights and no animation. She was also an adviser to the film, a process portrayed in some detail in the film *Saving Mr Banks*.

Travers loathed the film version, disapproved of the dilution of the harsher aspects of the Mary Poppins character (which featured Julie Andrews playing her as sweet not tart, pretty not plain, and firm not rude), felt ambivalent about the music and hated the lengthy animated sequences (in which Disney had overruled her objections). She was so enraged at what she considered shabby treatment at Disney's hands, Travers would never again agree to another *Poppins*/Disney adaptation, though Disney made several attempts to persuade her to change her mind.

So fervent was Travers' dislike of the Disney adaptation and of the way she felt she had been treated during the production, that when producer Cameron Mackintosh

approached her about the stage musical in 1993, when she was into her 90s, she acquiesced on the condition that no-one from the film production and only English-born writers were to be directly involved with creating the stage musical. This specifically excluded the Sherman Brothers (who had written the film music) from writing additional songs for the production. However, original songs and other aspects from the 1964 film were allowed to be incorporated into the production. Over the next few years, the show was developed and workshopped, opening in London in 2004 (after Travers' death). The show won 2 Olivier awards (for Best Actress and Best Choreography), before transferring to Broadway in 2006, where it ran for six years until 2013. Although the show was generally praised by the critics, especially for its magical and technical feats, and was nominated for 10 Tony awards, it won only one: for Scenic Design. An Australian version of the musical opened in 2010, starring Verity Hunt-Ballard in the title role, and featuring Marina Prior, Philip Quast, Debra Byrne, Matt Lee and Judi Connelli.



TAIERI MUSICAL COMMITTEE



PRESIDENT: Chris Hinch

IMMEDIATE PAST PRESIDENT: Tanla Graham

VICE PRESIDENT: Ben Thomas

SECRETARY: Blair Hughson

TREASURER: Rowena Monson

COMMITTEE: Lisa Caton, Bruce Clark, Evan Fenemor, Amella-Kate McDonald, Bruce McDowell, Sandra Nixon, Anna Thomson

AUDITOR: Peter Sample

LIFE MEMBERS: Leona Pine, Mike Harris, Jenny Keogh, Vera Parsons*, Ngaire Sutherland, Inez Robertson*, Vera Polson*, Julie Judd, Graeme Read, Bruce McDowell. *Deceased



Director DOUGLAS KAMO



With 20 years in the performance and entertainment industry, Dunedin-based Douglas is one of the busiest producers, directors and entertainers in the country. As a producer and director, he has been responsible for over 60 national and international musical-theatre productions, including *The Rocky Horror Show*, *Les Misérables*, *The Producers*, *The Addams Family*, *The Buddy Holly Story*, *Jesus Christ Superstar*, *Hot Shoe Shuffle*, *Cabaret*, *Chess*, *Me & My Girl*, *42nd Street* and *A Chorus Line*. He toured New Zealand & Asia in the International casts of *Chicago* and *Joseph*. Television credits include *Xena Warrior Princess*, *Street Legal*,

Shortland Street, *The Pretender* and *Passion in Paradise*. As a television host he has fronted *Lotto*, *The Lounge*, *Destination New Zealand*, *The Vodafone V24 Challenge* and *Hit the Road*. In 2014 he joined forces with Taieri Musical to co-produce Dunedin's sellout season of *Mamma Mia!*. He was awarded Best Direction at this year's Otago Southland Theatre Awards for his visionary production of *Grease: The Arena Spectacular* with Taieri Musical, and in 2018 he will direct *Priscilla: Queen of the Desert* for Musical Theatre Dunedin, and *Mamma Mia!* for both Showbiz Queenstown and Musical Theatre Oamaru.

Musical Direction MICHAEL GRANT

Since graduating from the University of Otago, Michael has been Teacher in Charge of Music at St Hilda's Collegiate School, where he has been musical director of numerous shows – including *Seussical*, *Into the Woods*, *Bugsy Malone*, *Suspect: A Murder Mystery* – and stage director of *Thoroughly Modern Millie*. For John McGlashan College, he has musically directed *Grease*, *Godspell* and *High School Musical*. Michael has performed on stage in Taieri Musical's *The Buddy Holly Story* and *Jesus Christ Superstar*, and for Musical Theatre Dunedin in *Miss Saigon*, as well as in a number of theatre restaurants. He has regularly played keyboard in the pit for Taieri Musical and Musical Theatre Dunedin – including for *My*

Fair Lady, *Les Misérables*, *Mamma Mia!* and *The Phantom of the Opera* – and he also joined the band for *Avenue Q* at the Fortune Theatre, where he regularly accompanies Underground Broadway. Michael was Vocal Director for *Grease: The Arena Spectacular*, winning Best Vocal Work by a Company at the 2016 Otago Southland Theatre Awards. He is delighted to be teaming up again with Doug and Emma.



Choreographer EMMA HOLLOWAY

Sydney-born dancer Emma trained in classical ballet, jazz, tap and contemporary dance from a young age. Her dance career took her around Australia, India and Taiwan on numerous corporate and theme-park contracts. She moved to New Zealand in 2008 and began teaching at Bennett School of Ballet and Jazz, while performing with Stage Struck Productions in the North Island, DKCM Ltd and the Otago Dancers, dancing at sporting and corporate events and such local productions as the *Big Night In*. Emma made her musical-theatre

debut in 2014 with DKCM and Taieri Musical's *Mamma Mia!*. At the Otago Southland Theatre Awards she won the Best Choreography Award for her work on the production. She has since choreographed shows around the region, including: *Oklahoma*, *The Addams Family*, *Gourmet Broadway*, *Anything Goes* and DKCM and Taieri Musical's 2016 *Grease: The Arena Spectacular!*, for which she won her second OSTA earlier this year. Emma has enjoyed working on *Mary Poppins*, a wonderfully magical story which we all know and love. She can't wait to join the audience and watch it come to life on the Regent stage.







Mary Poppins

NADYA SHAW BENNETT

Nadya thanks Taieri Musical for the opportunity to play three significant roles: Brigitta von Trapp (10-year-old début), the 'lovely' Eliza Doolittle and the 'practically perfect' Mary Poppins. Nadya has a first-class Honours Degree in Theatre Studies from the University of Otago, and has studied singing with Judy Bellingham. Her performance credits include Fortune Theatre plays (*Motor Camp*; *Love, Loss and What I Wore*; *Flagons and Foxtrots*; *Over the River and Through the Woods*); lead Gilbert and Sullivan roles (*The Gondoliers*; *Utopia [Limited]*; *The Grand Duke*); and documentary theatre (*Hush*; *Be/Longing*; and the one-woman play *My Name is Rachel Corrie*). A highlight of her time in London was a tour of the two-handed comedy *Romantic Fools*. In 2015 she won Dunedin's 'Female Performer of the Year' for Dun-Edie in *Farley's Arcade*. It has been a 'jolly holiday' working with Doug and the production team and she wishes everyone a wonderful season. 'Best foot forward!'

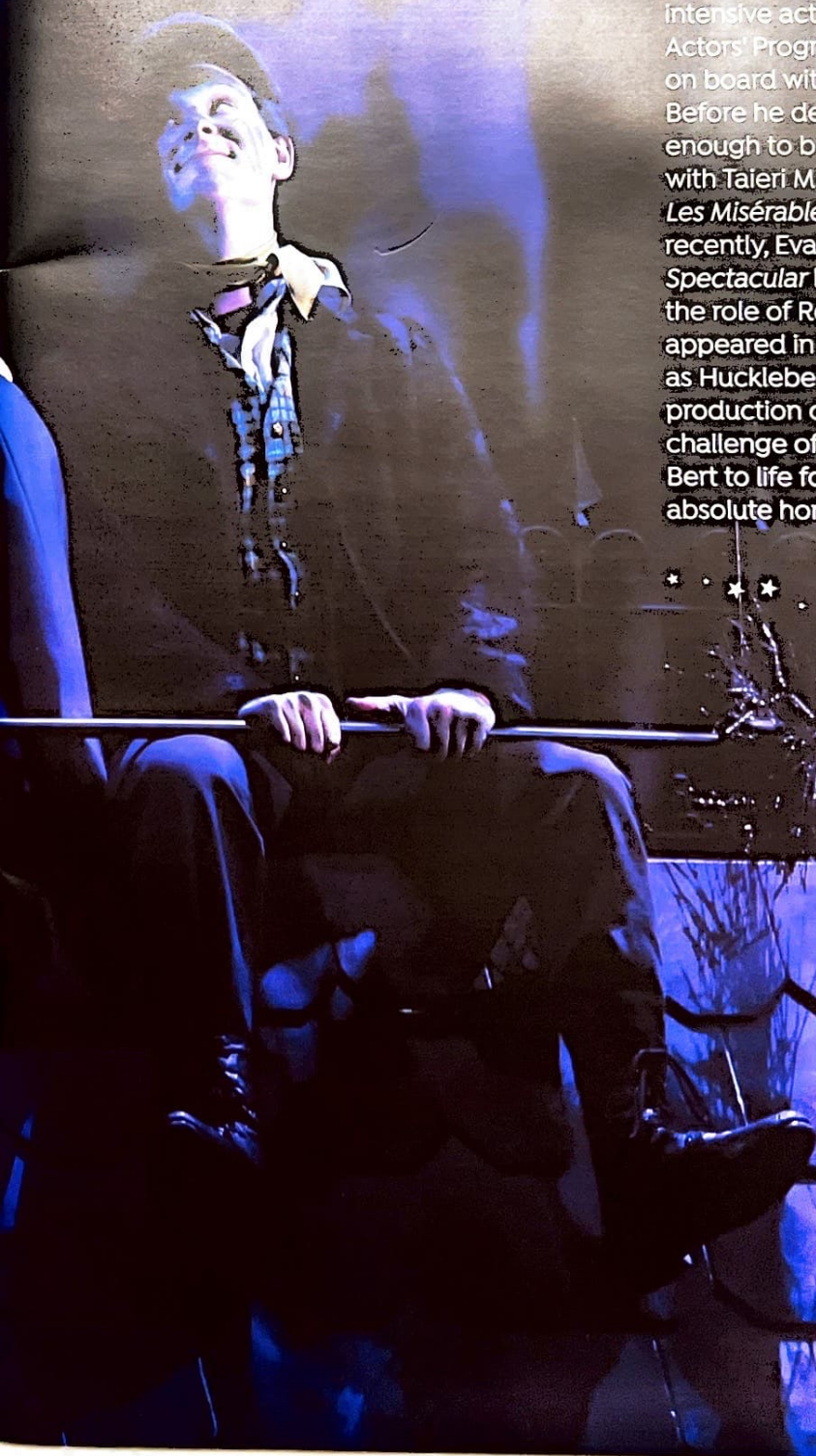




Bert

EVAN FENEMOR

After being lucky enough to attend a one-year intensive acting course in Auckland in 2015, The Actors' Program, Evan is incredibly excited to be back on board with Taleri Musical and DKCM once again. Before he departed for Auckland, Evan was fortunate enough to be involved with a number of productions with Taleri Musical, including *Jesus Christ Superstar*, *Les Misérables*, and as Sky in *Mamma Mia!* More recently, Evan appeared on stage in *Grease: The Arena Spectacular* last year with Taleri Musical and DKCM in the role of Roger. During his time in Auckland, Evan appeared in the feature film *The Rehearsal* and also as Huckleberry Finn in Auckland Theatre Company's production of *Tom Sawyer*. Being tasked with the challenge of bringing an iconic character such as Bert to life for this production of *Mary Poppins* is an absolute honour and one that Evan is thrilled to tackle.



PRINCIPAL CAST

George Banks **GREG MACLEOD**

Greg is a Dunedin singer, actor and a principal/teacher at Broad Bay School. His performance career was launched following his portrayal of Jesus in *Jesus Christ Superstar* (2001). Greg attended Toi Whakaari: The New Zealand Drama School (2004) and since has been involved with numerous theatre companies throughout New Zealand. Performance highlights include the Beast in *Beauty and the Beast* (2006), Jerry in *The Full Monty* (2008), Engineer in *Miss Saigon* (2010) Joseph in *Joseph and the Amazing Technicolor Dreamcoat* (2012), and Edna in *Hairspray* (2013). Greg and his wife, Heidi, produce and manage the Little Cabaret Band, a nine-piece big band specialising in corporate events, the most recent being *Planet Earth is Blue*, a David Bowie tribute concert.



Winifred Banks **KELLY HOCKING**

Kelly Hocking is a native of California, USA, where she trained in acting and voice at the American Academy of Dramatic Arts, Los Angeles. She now lives in Dunedin with husband Peter and daughter Scarlett. In New Zealand, Kelly has performed in productions for the Fortune Theatre, The Court Theatre, Musical Theatre Dunedin, Taieri Musical, North Shore Musical Society and in national touring productions for THETA. Performance highlights include Kate/Lucy in *Avenue Q*, Ellen in *Miss Saigon*, Roxie Hart in *Chicago*, and Janet in *Boeing Boeing*. Kelly works as a vocal coach, specialising in contemporary commercial music, and provides mentorship and training to other teachers. In 2014 she founded The Voice Lab™, a forum to bring singers and voice teachers together with leading voice professionals.



Michael Banks **LUCAS MACLEOD**

Lucas is a Year 5 student at Anderson's Bay School. He is the youngest of three siblings and has spent many years watching his sister, brother and his dad perform in musical theatre, and so it was really only a matter of time before he too joined them on the stage! Lucas has previously performed in school-holiday productions at the Playhouse Theatre, and learns hiphop at RASA. He also enjoys futsal, surf lifesaving, basketball, hockey and skiing.



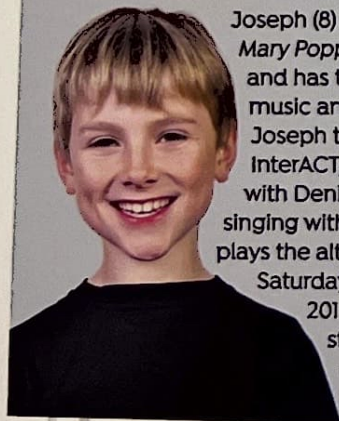
Jane Banks **GRACE JOHNSTON**

Grace is a Year 8 student at Columba College. She started dance lessons with Shona Bennett aged 3½ and continues to learn ballet, jazz and musical theatre at BSBJ. Grace has studied drama with Cindy Diver at InterACT for 6 years, learns speech and drama with Esther O'Neill at Rhetorical, and plays the clarinet. She loves performing in school productions, and has also been cast in various short film roles. Grace has loved being part of this talented cast.



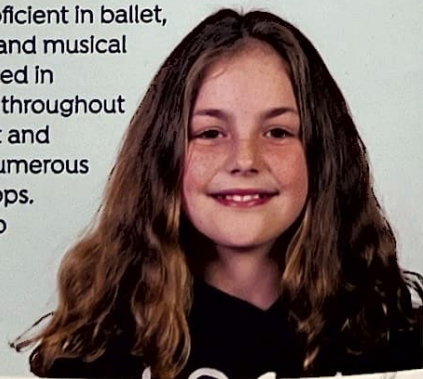
Michael Banks **JOSEPH KELLY**

Joseph (8) is delighted to join the cast of *Mary Poppins*. He loves being on stage and has taken leading roles in school music and drama performances. Joseph takes drama classes at InterACT, and musical-theatre classes with Denise Henderson. He learns singing with Barbara Hendry, and also plays the alto recorder and trumpet at Saturday Morning Music Classes. In 2016, Joseph debuted in his first stage role as Tiny Tim in Opera Otago's production of *A Christmas Carol*.



Jane Banks **SAMANTHA MCCORMICK**

Since age 5, Samantha has been studying singing and dancing. She also plays violin and piano, and is a singer in her school rock band. Samantha attended dance school in Australia for five years, becoming proficient in ballet, tap, jazz, contemporary and musical theatre. She has competed in numerous competitions throughout Brisbane, the Gold Coast and Sydney, and attended numerous musical-theatre workshops. Samantha is studying tap with Denise Henderson and has just competed in her first song and tap competition.



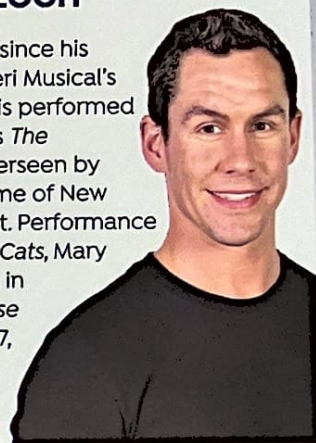
Mrs Brill **HARRIET MOIR**

For an 'almost' middle-aged broad who can't dance, it always astounds Harriet that she muscled her way into most local musicals, including *Mamma Mia!* (Rosie), *The Sound of Music* (the Baroness), and *Grease: The Arena Spectacular* (Miss Lynch). She is a popular MC and entertainer and performs regularly in Dunedin and further afield. In 2016 and 2017 she co-wrote and performed a sellout two-woman show for the Dunedin Fringe Festival. When not performing, Harriet can be found negotiating warfare between her two daughters or pimping out Dunedin babies at Miracle, the boutique store she co-owns in Wall Street Mall.



Robertson Ay **CHRIS KEOGH**

Chris has been involved in musicals since his first role, performing as Bugsy in Taieri Musical's *Bugsy Malone*, aged 13. Recently Chris performed the role of Rocky in Richard O'Brien's *The Rocky Horror Show*. The show was overseen by the creator himself and cast with some of New Zealand's best musical-theatre talent. Performance highlights include: Skimbleshanks in *Cats*, Mary Sunshine in *Chicago*, Dennis Galahad in *Spamalot*, Chuck Cranston in *Footloose* and Corny Collins in *Hairspray*. In 2007, Chris toured the South Island as a member of a Rat Pack tribute group managed and led by Doug Kamo.



Miss Andrew **ALETHEA CHITTENDEN**

Alethea is delighted to be a part of *Mary Poppins* as the tyrannical Miss Andrew. Her favourite previous roles include the Lady of the Lake (*Spamalot*), for which she won the 2016 Otago Southland Theatre Award for Best Leading Female in a Musical, Madame Giry (*The Phantom of the Opera*), Velma von Tussle (*Hairspray*) and Matron 'Mama' Morton (*Chicago*). Alethea has also performed roles in *Cats*, *Les Misérables*, *Die Fledermaus*, *Chess*, *A Funny Thing Happened on the Way to the Forum*, *Kismet* and the world premieres of John Drummond's *Larnach* and *Bridge to Somewhere* and Anthony Ritchie's *The Trapeze Artists*.



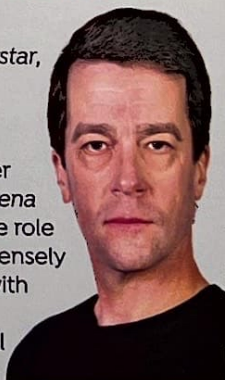
Bird Woman **ARLIE MCCORMICK**

Arlie McCormick's extensive performing career spans more than 20 years and she has effortlessly moved within the genres of pop, jazz, musical theatre and cabaret. She is the contemporary voice and musical theatre voice lecturer at the University of Otago and this is her first production with Taieri Musical. She is best known for her award-winning role as Diana in *Next to Normal*, Liza Minnelli in *The Boy from Oz*, Calamity Jane, and Reno in *Anything Goes*. In addition to this, Arlie was also part of cabaret group Babushka and successfully toured their multiple shows throughout Australia.



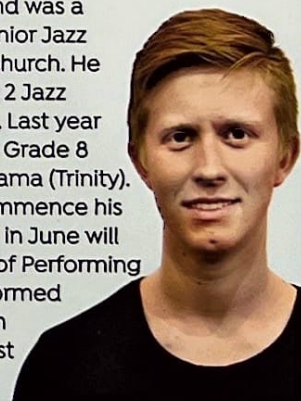
Admiral Boom/Bank Chairman **CHRIS HINCH**

Chris has performed in *Jesus Christ Superstar*, *Les Misérables*, *Mamma Mia!*, *The Sound of Music*, *Grease: The Arena Spectacular*, *Underground Broadway*, and *Mrs Brown's Other Boys*. Chris was production manager for *The Sound of Music* and *Grease: The Arena Spectacular*, and has recently taken on the role of President of Taieri Musical. Chris is immensely grateful to be part of this beloved show with such an incredible cast, and thanks Jill, Emma, Kelly, and Doug for their wonderful support.



Neleus **OLIVER DAVIDSON**

Oliver began dancing aged 7 years and was a member of both Senior Ballet and Senior Jazz Companies at Southern Ballet, Christchurch. He completed with distinction Advanced 2 Jazz (NZAMD) and Advanced 1 Ballet (BBO). Last year Oliver also completed with distinction Grade 8 Music Theatre (Trinity) and Grade 8 Drama (Trinity). Oliver recently moved to Otago to commence his Bachelor of Performing Arts (BPA) and in June will compete at the World Championship of Performing Arts in Los Angeles. In 2016 Oliver performed in *Mamma Mia!*, *Hairspray* and *Evita* with Showbiz Christchurch. This is Oliver's first production with Taieri Musical.

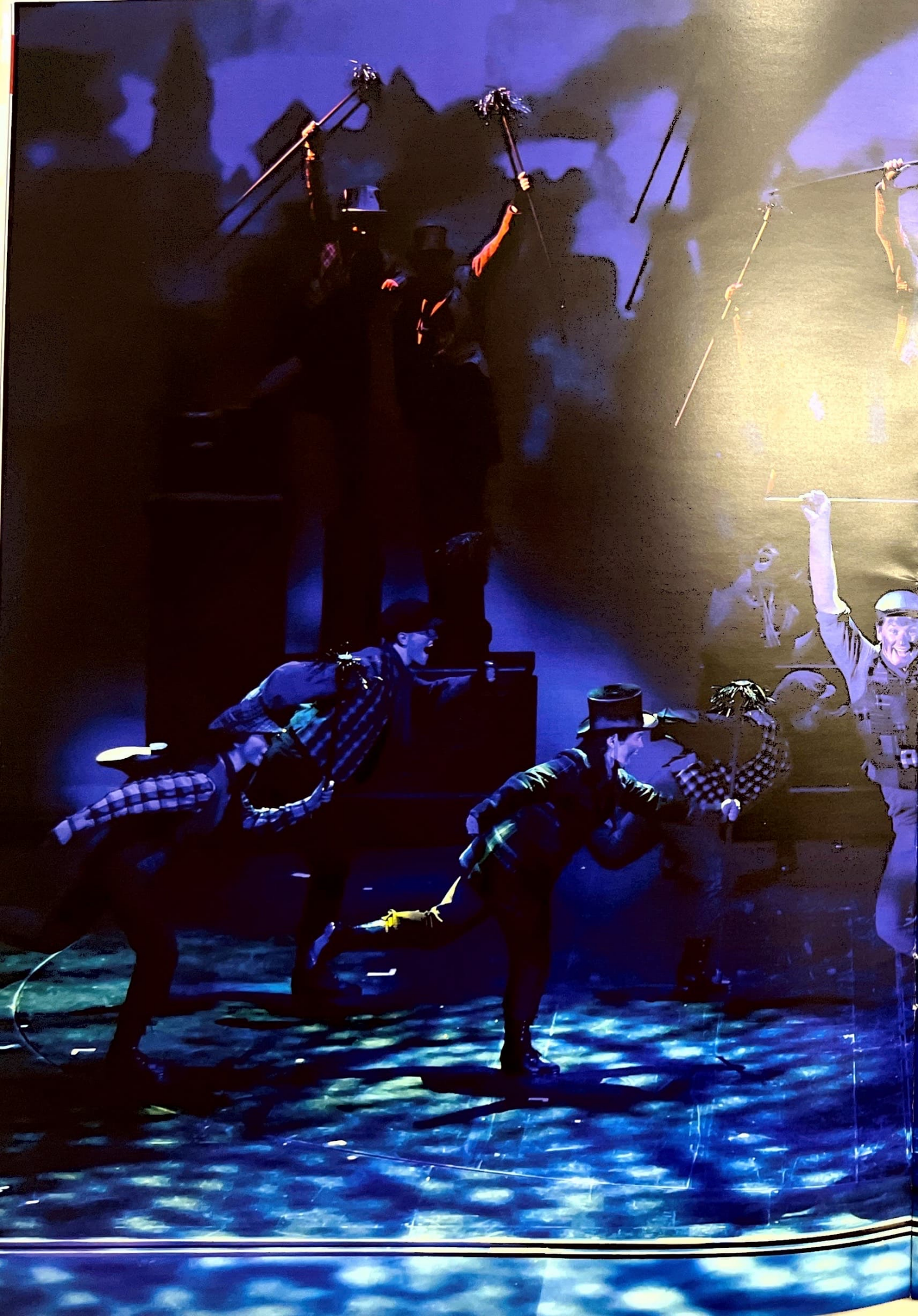


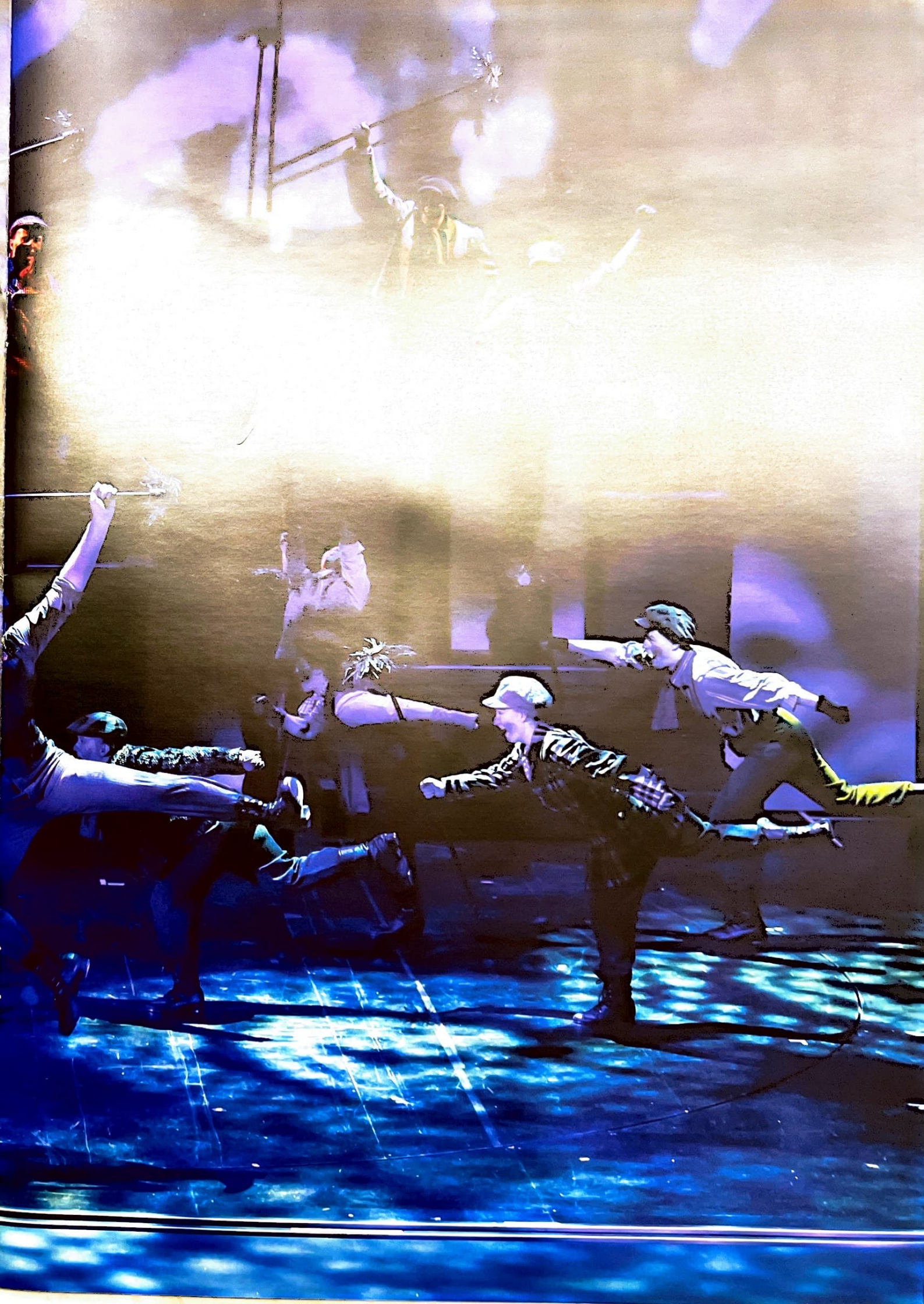
Mrs Corry/Queen Victoria **MĀRAMA GRANT**

Mārama graduated NASDA in 2006 with a Bachelor of Performing Arts. Prior to studying, Mārama was co-director at the Globe Young Persons Theatre in Dunedin, directing many children's productions. Professional highlights include *Three Little Pigs* and *Guys and Dolls* (Court Theatre), *84 Charing Cross Road* (Christchurch Repertory), *Mum's Choir* and *A Streetcar Named Desire*

(Fortune Theatre) and most recently in a sellout Melbourne season of *Medea* (Eagle's Nest Theatre Company). Mārama has also performed with Canterbury Opera and Showbiz Christchurch. Mārama works as a vocal coach, singing and drama teacher. This is her first appearance with Taieri Musical and DKCM.











Synopsis

Act One

Bert, a man of many trades, introduces us to the Banks family at No.17 Cherry Tree Lane. Jane and Michael Banks are constantly misbehaving, and Katie Nanna – the latest in a long line of nannies – has had enough ("Cherry Tree Lane"). She leaves, and George Banks asks his wife, Winifred, to place an advertisement in the newspaper for a new nanny, but the children decide to write their own ad ("The Perfect Nanny"). Mary Poppins arrives and fits the children's requirements exactly ("Practically Perfect").

Mary Poppins takes the children to the park, where they meet Bert, who is creating his latest works of art. Bored with the park and wary of Bert's scrappy appearance, the children try to escape, but Mary urges them to see the magic in everyday life. Then, the park bursts into brilliant colours as the statues come to life and dance with them ("Jolly Holiday").

As Mary Poppins begins to win over the children, George informs Winifred

that they must maintain order and convention. Winifred feels that she is disappointing her family, struggling to understand her role ("Let's Hope She Will Stay"). The household prepares for Mrs Banks' party ("A Spoonful of Sugar") but no one shows up. Mrs Banks is left feeling more lost than ever.

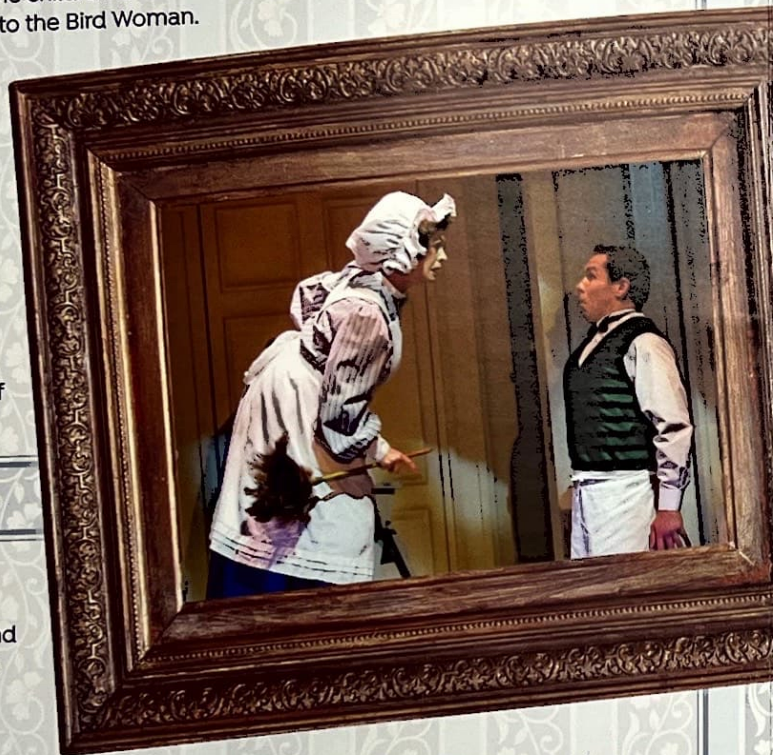
Mary Poppins takes Jane and Michael to visit their father at the bank ("Precision and Order"). George must decide between giving a loan to the dubious money-making Von Hussler, or an aspiring factory owner, John Northbrook, who has little collateral. Jane prompts George to remember the ideals and values he once held ("A Man Has Dreams"). He decides to take a chance on Mr Northbrook.

On the way home, the children and Mary Poppins run into the Bird Woman. Jane is still worried about outer appearances and shuns her, but Michael gives the Bird Woman money ("Feed the Birds").

Mary Poppins, Jane, Michael and Bert meet Mrs Corry, the mysterious owner of an unusual "talking

shop". The children are surprised to hear that, when their father was a boy, he came to this shop to enjoy its magic and spirit of invention ("Supercalifragilisticexpialidocious").

Things begin to go very wrong for George. Von Hussler goes to another bank and makes millions, and George is blamed for passing on the deal and is suspended without pay. In his stress, George yells at the children. In turn, an angry Jane and Michael fight over their toys, which magically come to life to teach them a lesson ("Playing the Game"). Recognizing the children are not yet ready for the lessons she has to teach them, Mary says goodbye to Bert ("Chim Chim Cher-ee"), leaving a note that reads, "au revoir," or "till we meet again."



Act Two

The fall has turned to winter. The house is bustling again because a nanny is returning to No.17 Cherry Tree Lane. However, it's not the much-missed Mary Poppins, but Miss Andrew, who raised George. Miss Andrew is a harsh woman who believes that children should be punished on a regular basis ("Brimstone and Treacle"). In a panic, the children escape the house and run to the park, where they meet Bert, who explains that the cure for every ill can be found at the end of a kite string ("Let's Go Fly a Kite"). Their kite flies up into the London sky and, when it comes back down, Mary Poppins is with it. George has also been hiding from Miss Andrew ("Good for Nothing"). With her entire family missing, Winifred worries that she is to blame, but resolves to assert herself and fight harder for the people she loves ("Being Mrs Banks").

Mary returns home with the children and defeats Miss Andrew in an epic battle of wits and will. George returns, relieved to find that Miss Andrew has left, but still anxious about supporting his family. Winifred reminds him he

can count on her and the children to stick by him.

Whisked up to the rooftops, Mary Poppins, Jane and Michael meet Bert and his fellow chimney sweeps ("Step in Time"). The sweeps dance across the rooftops of London and into the Bankses' house, wishing good luck to George and shaking his hand as they go.

The Bank Chairman asks to see George immediately. George fears the worst, but Bert reminds him that his family is more important than his ambitions ("A Man Has Dreams – Reprise/A Spoonful of Sugar – Reprise"). George leaves for the bank as Winifred wishes that she could go with him. Mary Poppins and the children encourage her to do what she believes is right ("Anything Can Happen").

In front of the bank's board of directors, George launches into a defence of his actions before they can tell him that he was right all along: Von Hussler's

scheme has fallen through, and the competing bank that approved his loan has been ruined. Northbrook's business, on the other hand, is thriving and earning a healthy profit. Winifred shows up, ready to defend her husband, but, when she finds the board is promoting him, she negotiates his raise for him. George announces that, from now on, his family comes first. As George and Winifred walk along the streets of London, Mary Poppins takes Jane and Michael on one more magical adventure – this time, through the heavens.

Her job done, Mary Poppins says her goodbyes and flies off to her next task. Although the Banks family is sad to see her go, they are glad that they have finally found one another.



Scene List



Act 1

- Scene 1 Cherry Tree Lane**
Chim Chim Cheree, Cherry Tree Lane - Part 1, The Perfect Nanny, Cherry Tree Lane - Part 2
- Scene 2 Mary's Arrival (Parlour)**
- Scene 3 Practically Perfect (Nursery)**
Practically Perfect
- Scene 4 Jolly Holiday (Park)**
Jolly Holiday
- Scene 5 Let's Hope She Will Stay (Parlour)**
- Scene 6 Spoonful of Sugar (Kitchen)**
A Spoonful of Sugar
- Scene 7 The Bank**
Precision and Order, A Man Has Dreams
- Scene 8 Feed The Birds (Cathedral Steps)**
Feed The Birds
- Scene 9 Supercalifragilisticexpialidocious (Park)**
Supercalifragilisticexpialidocious
- Scene 10 Bad News (Street, Parlour)**
- Scene 11 Playing the Game (Nursery)**
Playing The Game
- Scene 12 Chim Chimney (Roof)**
Chim Chim Cheree

Act 2

- Scene 1 Brimstone and Treacle**
Cherry Tree Lane (Reprise), Brimstone and Treacle
- Scene 2 Let's Go Fly a Kite (Park)**
Let's Go Fly a Kite
- Scene 3 Good For Nothing (Park)**
Good For Nothing
- Scene 4 Winifred Despairs (Park)**
Being Mrs Banks
- Scene 5 Brimstone and Treacle Revisited (Parlour)**
Brimstone and Treacle (Part 2)
- Scene 6 George Returns (Parlour)**
Practically Perfect (Reprise)
- Scene 7 I'll Stay Until The Chain Breaks (Nursery)**
- Scene 8 Step In Time (Roof)**
Step In Time
- Scene 9 A Man Has Dreams (Parlour)**
A Man Has Dreams
- Scene 10 Anything Can Happen (Nursery)**
Anything Can Happen Part 1
- Scene 11 Anything Can Happen Part 2 (Cathedral Steps, Bank)**
- Scene 12 Anything Can Happen Part 3 (Park, Heavens)**
Anything Can Happen Part 2
- Scene 13 I Love You Mary Poppins (Park)**
A Spoonful of Sugar (Reprise)
- Scene 14 Family Life (Nursery)**
A Shooting Star

Full Cast List

Principals

Mary Poppins	Nadya Shaw Bennett
Bert	Evan Fenemor
Mr Banks	Greg MacLeod
Mrs Banks	Kelly Hocking
Jane Banks	Samantha McCormick, Grace Johnston
Michael Banks	Lucas MacLeod, Joseph Kelly
Mrs Brill	Harriet Moir
Robertson Ay	Chris Keogh
Miss Andrew	Alethea Chittenden
Bird Woman	Arlie McCormick
Admiral Boom/Bank Chairman	Chris Hinch
Neleus	Oliver Davidson
Mrs Corry/Queen Victoria	Marama Grant

Ensemble

Scott Bezett
Max Beal
Bryn Monk
Joshua Larkins
Nic Laughton
Scott Christie
Reynard Dain
Janine Weatherley
Lydia Bernard
Leah Hay
Cadyne Geary
Summer Johnson
Jane Craigie-Read
Anna Thomson
Petra Leonard
Toni Shanks
Destiny Carvell
Rebecca McCracken
Charlotte McKay

Support Singers

Mason Bouzaid
Lucia Vincent
Hannah Pearson
Sophie O'Driscoll
Nicole Everett



Orchestra

Bass Daniel Potter
Cello Nisa Jaafar
Guitar Mike Moroney
Horn I Geeny Moon
Horn II Nigel Finney
Keys I Sandra Christie
Keys II Stuart Walker
Percussion I George Watts
Percussion II
Maddy Parkins-Craig

Reed I Natasha Manowitz
Reed II Jonty Schmidt
Reed III Hamish Prince
Trombone I Ted Pheloung
Trombone II Althea Blakey (Alfie)
Trumpet I Lydia Anderson
Trumpet II Anton Dunford







ENSEMBLE

Max Beal Mr Northbrook

Max is very excited to be a part of Taieri Musical and DKCM's *Mary Poppins*. He has been classically trained in singing for seven years. In 2016, Max played Patsy in Musical Theatre Dunedin's *Spamalot*, for which he gained the OSTA for Best Supporting Male, and the iTicket Upcoming Talent Scholarship. This year Max won 'Outstanding Actor' in the Sheila Winn Shakespeare Festival, is playing Pharaoh in *Joseph and the Amazing Technicolor Dreamcoat*, and Rapunzel's Prince in the Fortune Theatre's *Into The Woods*.



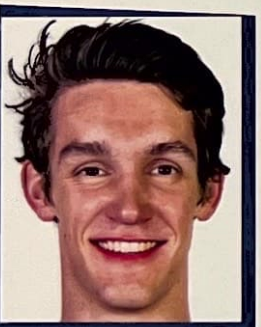
Lydia Bernard Miss Lark

Lydia always loves being involved in Taieri Musical productions, with some of her favourites being *Grease: The Arena Spectacular*, *Mamma Mia!* and *Gourmet Broadway*. She graduated from the University of Otago with a Bachelor of Performing Arts at the end of last year. Her most recent performance credits include Blaise in *Behind Bars* as part of the Lunchtime Theatre Series, Cathy in *The Last Five Years* and Red in the Fortune Theatre's production *Little Red Riding Hood*.



Scott Bezett Von Hussler

Mary Poppins is Scott's second major production with Taieri Musical and DKCM after performing in *Grease: The Arena Spectacular* last year. He is thrilled to be a part of such a talented cast and crew. He is in his second year at the University of Otago, studying Classics, Maths and Classical Voice under Judy Bellingham. Outside of performing, Scott is a keen rower for North End Rowing Club and the University of Otago.



Destiny Carvell

Destiny has just completed her second year of an education degree in which she is working towards becoming a primary school teacher. She is an accomplished tap-dancer, having been taught by Denise Henderson for 14 years. A recent highlight was placing 5th overall in New Zealand at the National NZAMD Tap Dancing Scholarship Weekend last November. *Mary Poppins* is Destiny's second musical with Taieri Musical. She's looking forward to working with the talented cast and crew of *Mary Poppins*.



Scott Christie

The movie *Mary Poppins* was a huge part of Scott's childhood, being one of the first musicals he ever watched. This makes it a huge honour to perform in the cast of *Mary Poppins*. This is Scott's fourth show for Taieri Musical, having previously been in *Oliver!*, *The Sound of Music* and *Grease: The Arena Spectacular*. Scott has also been learning tap-dancing for almost three years and is excited to show off his tap skills in 'Step in Time'.



Jane Craigie-Read Katie Nanna

Jane is well known to Dunedin audiences, having performed in numerous productions since 2001, with highlights including: *Encore*, *Beauty and The Beast*, *Jesus Christ Superstar*, *Les Misérables* and *Mamma Mia!*. She is thrilled to be working with the DKCM and Taieri Musical team again in one of her favourite musicals – not to mention getting reacquainted with her tap shoes! When not on stage, Jane works in local government and is the proud Mum of a busy two-year-old.



Reynard Dain

Reynard is thrilled to be working again with this talented group for *Mary Poppins*. This will be Reynard's third production with Taieri Musical and DKCM, following *Grease: The Arena Spectacular* in 2016. His other credits include *Hairspray* and *Mamma Mia!*. Reynard has been singing and dancing since the age of five. Reynard teaches Hip-Hop and Korean-Pop (K-Pop) at Otago Dance Association. He thanks the *Mary Poppins* team for their support, but most of all, is grateful to his wonderful family.



Cadyne Geary Fannie

Cadyne's passion for performance has grown with 13 years of dance training in mostly ballet, jazz and aerobics. She is in her third year of a Bachelor of Physical Education at the University of Otago, working part-time at Air Fitness as a class instructor, trainer and receptionist. Cadyne has performed in Taieri Musical's *Mamma Mia!* and *Grease*, and Musical Theatre Dunedin's *Phantom of the Opera*. She would like to thank her beautiful friends and family for their support.



ENSEMBLE

Leah Hay

Leah is 23 years old and works as a speech language therapist at Dunedin Hospital. She has been singing and dancing since the age of four and is looking forward to what will be her sixth show for Taleri Musical, with a highlight being playing Jan in *Grease: The Arena Spectacular*. With such a great cast and production team, Leah is excited to be part of *Mary Poppins*, performing in this wonderful family favourite. She hopes you enjoy the show.



Summer Johnson Annie

Summer is a 16 year old student at Otago Girls' High School. She first performed with Taleri Musical in 2014 in *The Sound of Music*. Summer has learned tap-dancing from Denise Henderson for 12 years, competing in the National Young Performer Awards 2016. She learns singing from Judith Borick, and piano and guitar from Sandra Dingwall. Summer also enjoys competing in regional and national aerobics competitions. She is looking forward to performing with Taleri Musical again in *Mary Poppins*.



Joshua Larkins Park Keeper

This is Joshua's first show with both Taleri Musical and DKCM and he has enjoyed getting to know and learn from a new creative and production team. After performing in Musical Theatre Dunedin's *Spamalot* last year, he has been eager to get back on the stage in 2017 with the cast of *Mary Poppins*. He is also an aspiring guitarist and singer/songwriter who has plans to release an EP within the next 12 months. Enjoy the show!



Nic Laughton Valentine

Nic has been singing since the age of 6. His first show was *Oliver* with Taleri Musical at the age of 10, as Oliver. In 2016, Nic was in *Grease: The Arena Spectacular* with Taleri Musical, and in *The Lion King* as Simba with King's and Queen's High Schools. Nic has had a very busy year, also being involved in Bayfield High School's *Anything Goes* as Moonface, and has just been cast as Jack in the Fortune Theatre's *Into the Woods*.



Petra Leonard

Mary Poppins is Petra's second production with Taleri Musical. Her other theatre credits include *Grease: The Arena Spectacular*, *Dusty: The Original Pop Diva*, *Joseph and the Amazing Technicolor Dreamcoat*, *Miss Saigon*, and 'Mimi' in the theatre restaurant *Allo' Allo*. Petra has been dancing all her life and has spent three years with the Otago Dancers. She was fortunate enough to be invited to perform at Disneyland, Los Angeles. Petra has a Bachelor of Education Studies endorsed with Physical Education and Dance.



Rebecca McCracken

Rebecca is a Dance Studies graduate from Auckland University, currently studying towards a Master's in primary school teaching here at the University of Otago. She has danced since age 4, exploring all styles of dance. At 7, Rebecca started singing lessons, supporting her love of the stage. This is Rebecca's third show with Taleri Musical, having performed in both *Honk!* and *My Fair Lady*. She is looking forward to being back on the stage in Dunedin, bringing *Mary Poppins* to life.



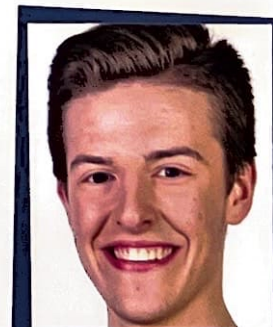
Charlotte McKay

Charlotte has studied and performed in several cities around New Zealand and Australia, but is now settled in Dunedin. She has worked professionally in musicals, opera, choirs, and vocal ensembles, including work for NZ Opera and Chamber Music NZ. Charlotte's most recent Dunedin appearances include a two-woman cabaret show she co-created for the Dunedin Fringe Festival, and playing Rizzo in *Grease: The Arena Spectacular*. Charlotte co-founded and runs Underground Broadway, a music-theatre performance platform that plays regularly at the Fortune Theatre.



Bryn Monk

Bryn is beyond excited to be part of the cast of *Mary Poppins*! This is his fourth production with Taleri Musical, and second with DKCM, most recently playing the role of Eugene in *Grease: The Arena Spectacular*. Later this year Bryn will be starring as The Steward in the Fortune Theatre's *Into the Woods*. He thanks his tap-dancing teacher Denise Henderson, his singing teacher Arlie McCormick, and his friends and family for their continued support. Enjoy the show!



ENSEMBLE and Support Singers

Toni Shanks

Toni has been involved in musical theatre for years, with performance highlights including *The Phantom of the Opera*, *Les Misérables*, and *Jesus Christ Superstar*. Toni graduated from the University of Otago with a Bachelor of Performing Arts in December 2016. She originated the role of 'Nora' in the Lunchtime Theatre production of *Behind Bars* as part of her final year at University. Since then Toni has been enjoying teaching her own singing pupils and running the choir at Taieri College.



Anna Thomson

Mary Poppins is Anna's fifth show for Taieri Musical, following turns as the kooky Helen Staddercheck in *Grease*, Sister Margaretta in *The Sound of Music*, and the ensembles of *Mamma Mia!* and *My Fair Lady*. Previous shows for MTD include *Dusty*, *Joseph*, *Hairspray*, *Phantom of the Opera*, *Lights on Broadway 2* and the role of Olive Ostrovsky in *The 25th Annual Putnam County Spelling Bee*. Anna will soon be completing her BA before taking on the world, boots and all.



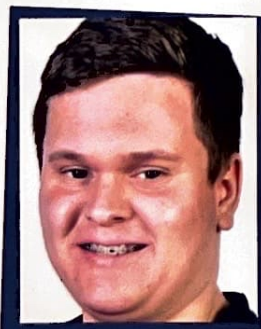
Janine Weatherley Miss Smythe

Mary Poppins is Janine's fourth show for Taieri Musical and she is excited to once again be a part of the dedicated and passionate team. Her theatre credits include: *Grease: The Arena Spectacular* (2016), 'Maria' - *The Sound of Music* (2015), Musical Theatre Dunedin's Theatre Restaurant *We Need a Little Christmas* (2014) and *Mamma Mia!* (2014). Being a full-time teacher and a mother of two stunning children, Janine would like to thank her husband, Graham, for being such a 'rock' during the production process.



Mason Bouzaid Support Singer

Currently a senior student at Taieri College, Mason is also the lead vocalist in his school band, which made it into the regional final of *Smokefree Rockquest* in 2016. He was also lucky enough to be in the chorus for *Grease: The Arena Spectacular* in 2016, which he enjoyed so much, and he is excited to be involved in his second production with Taieri Musical and DKCM, *Mary Poppins*.



Nicole Everett Support Singer

Nicole has been singing for 26 years, starting with classical training then moving on to a country music background. She has competed in several competitions locally and has also competed in three Gold Guitar Awards. Nicole has been learning for three years with Bridget Telfer and has decided to move into musical theatre to gain more experience in this area. She is loving the experience of being a part of *Mary Poppins* and is very grateful to Taieri Musical.



Sophie O'Driscoll Support Singer

Sophie is in her first year of a visual arts degree. She has a passion for the performing arts and has participated in many school shows and choirs. Last year, as a final year student, Sophie was cast in the leading role of 'Delores Price' in the St Hilda's production *Suspect: A Murder Mystery*. Sophie, who has learned singing with Bridget Telfer since age 11, is looking forward to being in her first major local production as a backing vocalist.



Hannah Pearson Support Singer

Hannah is a third-year student at the University of Otago. This is her first show with Taieri Musical and she is delighted that it is such an iconic one. Hannah has previously performed for Musical Theatre Dunedin. She learns singing from Gladys Hope, and also studies musical theatre voice with Arlie McCormick and tap with Sheridan Labes. Hannah is very excited to help share the story of *Mary Poppins* and knows you'll love it as much as she does.



Lucia Vincent Support Singer

Lucia works as a lawyer in the Litigation Team of Webb Farry Lawyers, specialising in employment law. Lucia studied law and performing arts at the University of Otago, completing an honours degree in theatre studies. Lucia's dissertation focused on how community-based theatre can instigate radical social change. She is excited to be involved in the great work Taieri Musical does, and, of course, *Mary Poppins*!



in Association with MGM On Stage
Exclusively Licensed by Origin Theatrical Pty Ltd

MUSICAL THEATRE DUNEDIN presents

PRISCILLA

Queen of the Desert

The Musical

WRITTEN BY
Stephan Elliott & Allan Scott

BASED ON THE
Latent Image/Specific Films Motion Picture

DISTRIBUTED BY
Metro-Goldwyn-Mayer Inc.

MUSICAL ARRANGEMENTS AND ORCHESTRATIONS BY
Stephen 'Spud' Murphy

DEVELOPED FOR THE STAGE AND ORIGINAL DIRECTION BY
Simon Phillips

DIRECTION BY
Douglas Kamo

MUSICAL DIRECTION BY
Stuart Walker

CHOREOGRAPHY BY
Emma Holloway

COMING IN MAY 2018

REGENT THEATRE

For more information visit:
www.musicaltheatredunedin.org.nz

UNITED

SCAFFOLDING GROUP

COMMERCIAL • DOMESTIC • INDUSTRIAL

- Tube & Clip
- Swing Stages
- Aluminium Mobiles
- Prop Hire
- Grandstands
- Tifa-Lite Form Work

Proud to
support
'Mary Poppins'

DUNEDIN (03) 455 1100

www.aplkwikform.co.nz

MITRE 10 ON DEMAND

Check out our Easy As Tips
Everything from How to Patch a Hole in the
Wall to Reducing Home Heat Loss
www.mitre10.co.nz/ondemand

The Mitre 10 Clubs
Get inspiration, advice and
exclusive offers

MITRE 10 HOME IMPROVEMENT CLUB

MITRE 10 GARDEN CLUB

Airpoints

There's more than flights to spend your Airpoints Dollars™ on
How will you spend yours?

DIY buy

Check out airpoints.co.nz

MITRE 10 MEGA DUNEDIN

350 Andersons Bay Road
03 455 3344
mitre10.co.nz

FUJI XEROX

Fuji Xerox are proud to be
a supporter of DKCM Ltd



0800 FUJI XEROX
www.fujixerox.co.nz



FABRICATION REPAIR & MAINTENANCE

**All forms of mining equipment
Earth moving machinery
Forestry and agricultural
Heavy transport
Certified welding
Marine
Oil industry
Stainless and alloy**

24A Bauchop Street Dunedin, 9016

www.siteweld.co.nz



**CORE
DEVELOPMENT**

CUSTOM ONLINE SOLUTIONS

**Core Development
is proud to support
theatre in Dunedin**



www.coredev.co.nz





PRODUCTION TEAM

PRODUCTION MANAGER

Liv Graham

Liv is 21 years old and has been involved with dance and musical theatre most of her life. She graduated in December last year with a Bachelor of Applied Management, majoring in Human Resources and Event Management, and has recently started working as an Event Coordinator at Dunedin Venues Management Limited. Liv is very excited about taking on this challenge of Production Manager for *Mary Poppins* and would like to thank DKCM and Taieri Musical for providing her with this opportunity.



PRODUCTION ACCOUNTANT

Rowena Monson

Rowena first began her involvement with musical theatre when her daughter, Louise, started performing at a young age. Louise is now grown up and performing in Auckland, however, Rowena has continued working with Taieri Musical, taking on the mammoth role of Treasurer in 2013. Rowena has made some lifelong friends through her involvement, and loves being part of the administration team, working closely with Tania to achieve successful Taieri Musical productions.



STAGE MANAGER/SHOW CALLER

Ian McCabe

Ian has been involved in musical theatre since his teens, originally as a musician. Ian moved out of the pit in 2010 and has since worked extensively backstage in a variety of crew and stage management roles for both Taieri Musical and Musical Theatre Dunedin. Ian is honoured and excited to be working with such a team on this, his second show with Taieri Musical and DKCM, as stage manager and show caller. "Beginners Act 1 - Spit spot!"



TECHNICAL MANAGER & HEAD MECHANIST

Garry Gibson

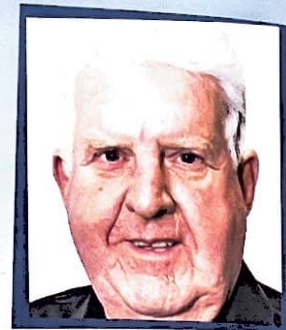
Garry has had vast experience working backstage as Technical Manager. He has performed this role for several Taieri Musical shows, including *Les Misérables*, *Mamma Mia!*, and *Grease: The Arena Spectacular*. Other shows include *The Phantom of the Opera*, and operas for the University of Otago. Garry enjoys the challenge of getting the set into the venue, ensuring all aspects are working correctly, and working closely with the director to achieve his vision, as well as working with the sound, lighting and visual effects teams.



SET MECHANICS/BUILD

Jim Monson

Since getting involved when his daughter, Louise, began performing, Jim has worked on many shows, mostly for Taieri Musical, Musical Theatre Dunedin and the University of Otago. He would like to thank his construction team for their effort and time in building the additional set required for this show. Jim looks forward to another highly successful season with Taieri Musical and DKCM.



PROPS MANAGER

Anne Gilkison

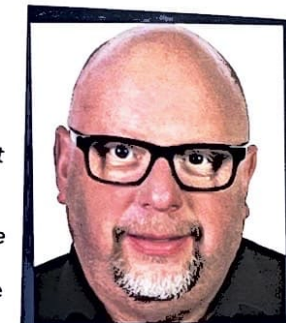
Anne has been working backstage for Taieri Musical for the past 11 years, after coming from a background of no musical-theatre experience at all. She loves being part of the team that brings musical-theatre shows to life, and hopes you enjoy the magic of the enchanting story of *Mary Poppins* tonight.



WARDROBE MANAGER

Samuel Keen

Samuel's vast theatrical experience includes production management of *West Side Story*, *42nd Street*, *Les Misérables*, *Fiddler on the Roof*, *Cabaret* and *Miss Saigon*, and wardrobe management for *Beauty and the Beast*, *Cats*, *Chicago*, *Dusty*, *Joseph*, *The Phantom of the Opera* and *Spamalot*. Samuel sincerely thanks the wardrobe team for all their hard work and enthusiasm in the completion of the *Mary Poppins* wardrobe.



WEB DESIGN & DEVELOPMENT

Blair Hughson

Having been involved with Taieri Musical for the past 14 years, both on stage and behind the scenes, Blair has really enjoyed watching this show come together. The positive response to our online ticketing pre-sales has been a highlight and it was fantastic to see our audience members showing such commitment to the show in those early stages. As always, it has been a privilege working with the fantastic team at Taieri Musical and DKCM.



LIGHTING & VISION DESIGNER

Dave Spark

Dave is a professional lighting and video designer with over 15 years of experience in the industry. He has designed and produced corporate and theatre events all over the country. Dave is highly sought-after for his creative innovative top-end video and production design and technical solutions. He currently runs his Christchurch-based company, Pixel, which designs and supplies a large variety of video displays and visuals for events.



SOUND DESIGN

Bart Barkman

Bart Barkman has designed and mixed theatre shows in Australia, New Zealand, South Africa, the Middle East and Asia. He started at the Regent Theatre on Capping Shows and *Rocky Horror*. Then off to Australia for a couple of decades, starting with two years on Disney's *Beauty and the Beast*. Bart has worked on shows such as *Saturday Night Fever*, *Jesus Christ Superstar*, *The King and I*, *Cabaret*, *Shout*, *Stevie Wonder*, *The Beastie Boys*, Stadium Australia Opening and *The Main Event*.



COSTUME DESIGN

Stephen Robertson

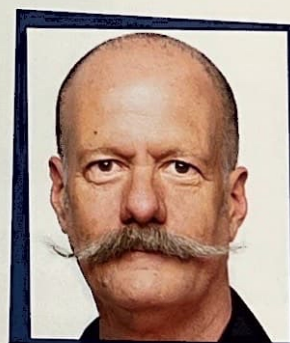
Stephen is a freelance director, spending much of the year touring NZ directing, staging and designing for musicals, corporate events and cabaret. Directing credits include *Chess*, *A Chorus Line*, *Chicago*, *Jesus Christ Superstar*, *West Side Story* and *Avenue Q*; NZ premières of *Les Misérables* (Wellington), *42nd Street* (Wellington); *Beauty and the Beast* (Wellington); *Cats* (Christchurch) and *Miss Saigon* (Christchurch); and *The Phantom of the Opera* in Palmerston North, Christchurch, Invercargill and Dunedin. Design credits include: *Anything Goes* (set & costumes), *Jesus Christ Superstar*, *West End to Broadway I, II and III*, *Grease*, *A Chorus Line*, *Fiddler on the Roof*, *Chicago* (set & costumes), *Joseph*, *Buddy* (set and costumes), *Avenue Q* (puppet design and construction), *Cats*, *Beauty and the Beast*, *Evita* (set & costumes). Costume design credits for The Court Theatre, Christchurch: *Grease*, *The Mikado*, *One Man Two Guvnors*, *Ropable*, *The Lady Killers*, *End of the Rainbow*, *Mary Poppins*, *Legally Blonde*, *Blood Brothers* (set & costumes). Stephen is currently working on designs for *Wicked*, *Les Misérables* and *Chicago*.



PRODUCTION DESIGN

John Harding

John has had a versatile career, not only as one of NZ's most respected theatre designers, but also as a film and television designer, art director, and character and costume designer. Design credits include *The Dead Room*, *Hope and Wire*, *Rage and Predicament*, and he was the Costume Designer on James Cameron's *Avatar*. John worked for Weta Workshop on *The Lord of the Rings* trilogy in many roles. He also designed and developed miniature sets, native costumes and weapons for *King Kong* and *The Hobbit* trilogy. Recent theatre-design highlights include *Chicago*, *West Side Story* and *Mamma Mia!*. John has won many awards for his work, including *Lysistrata*, *The God Boy*, *Predicament*, *Until Proven Innocent*, *Home by Christmas* and the short films *Fog* and *The King Boys*. Art-director work includes the American telemovie *Fatal Contact: Bird Flu in America*, the NZ TV series *Kidnapped* (Robert Louis Stevenson), and Larry Parr's feature *Fracture*.



FRONT-OF-HOUSE MANAGER

Sandra Nixon

Sandra is delighted to be involved with Taieri Musical's production of *Mary Poppins*. She has been an active member of the society for the past 12 years and thoroughly enjoys working with such a dedicated team, ensuring the Front of House runs smoothly. Sandra wishes everyone in *Mary Poppins* the very best for yet another great production.



HAIR & WIGS DESIGN

Kylie Hayes

Moha Hairdressing is passionate about and committed to beautiful hair. They have had many successes within their industry, are hugely respected, and have won many national and international awards. They have just been announced as finalists for the Coveted Sydney Hair Expo Awards, including NZ Hairdresser of the Year and Apprentice of the Year. Moha have a commitment to education and this means they are ever growing. With all the enjoyment Moha had last year working on *Grease*, they were only too happy to work alongside DKCM and Taieri Musical once again.



Moha

Proud to be the official hairstylists of Mary Poppins!

119 PRINCE ALBERT ROAD, ST KILDA, DUNEDIN | 03 455 0098



Production Personnel

PRODUCERS DKCM Ltd, Taleri Musical
EXECUTIVE PRODUCERS Doug Kamo, Tania Graham
PRODUCTION MANAGER Liv Graham
DIRECTOR Doug Kamo
MUSICAL DIRECTION Michael Grant
CHOREOGRAPHER Emma Holloway
REHEARSAL PIANISTS Sandra Christie, Stuart Walker
VOCAL ASSISTANT Kelly Hocking
STAGE MANAGER & SHOW CALLER Ian McCabe
TECHNICAL MANAGER & HEAD MECHANIST Garry Gibson
ASSISTANT STAGE MANAGERS Bruce McDowell, Nyssa Mildwaters
FOLLOW SPOT Hannah Clark-Younger, Nigel Donehue, Kerry Horsnell
SOUND DESIGN AND OPERATOR Bart Barkman
RADIO MICROPHONES Lisa Caton, Christine Gibson, Rowena Monson
LIGHTING & VISION DESIGN Dave Spark
LIGHTING & VISION OPERATOR Errol Head
REVOLVE Nicki Templeton
FLY CREW Garry Gibson, Bruce McDowell, David Templeton

THEATRE FLYING David Fish, Stuart Johnston, Stephen Barber
FLOOR CREW Karen Blick, Bruce Clark, Jade Fraser, Brian Horsnell, Helen Horsnell, Jim Monson, Alex Templeton, Nicki Templeton, Murray Wright, Paul Mulholland, Aniko Flora, Murray Flora, Peter O'Brien
PACK IN Gareth Bruce, Aniko Flora, Murray Flora, Niel Louw, Alistair Martyn, Murray McGregor, Peter O'Brien, Roger Caton, Ken Bagnall, John Findlayson
WARDROBE MANAGER Samuel Keen
ASSISTANT WARDROBE MANAGER Jemma Dougherty
COSTUME SUPERVISOR Lynette Ballantine
ADDITIONAL COSTUMES Janet Collie
WARDROBE MANAGER PERSONAL ASSISTANT Linda Brewster
ALTERATIONS Phyll Esplin, Sue Howard, Shigeko Iwamuro, Joan Toomey, Cynthia Wong
DRESSERS Vicky Bagnall, Jade Benfell, Barbara Bloemsaat, Erica Cheriton, Kathryn Corry, June Driver, Phyll Esplin, Sue Howard, Shari McCabe, Heidi McGregor, Sheree Mason, Esther Smith, Cynthia Wong, Lynda Wright-Sear
HAIR AND WIGS MANAGER Kylie Hayes
HAIR AND WIGS TEAM Pauline Cracknell, Haley Duffy, Liana King-Biddulph, Kerry Remon, Sally Remon, Wendy Wilson

MAKEUP MANAGER Amber Swaney
PROPS MANAGER Anne Williams
PROPS ASSISTANT Deirdre Bruce
FRONT-OF-HOUSE MANAGER Sandra Nixon
FRONT-OF-HOUSE TEAM Cherie Bouzaid, Alan Carter, Desiree Crooks, Karen Duncan, Margaret Gilbert, Tania Graham, Liv Graham, Vanya Hammond, Dave Hammond, Donna Hay, Sam Hendry, Mary Jane Jarvis, Margot Koele, Marlon Carter, Nyva Oum, Joy Pearson, Kerry Popham, Carolyn Russell, Karen Scammell, Jill Thomas, Kathleen Wallace, Julie Williams, Jean Young
MARKETING & SPONSORSHIP DKCM Ltd
MARKETING ASSISTANT Ben Thomas
WEB DESIGN & DEVELOPMENT Blair Hughson
PROGRAMME MANAGER Ben Thomas
GRAPHIC DESIGNERS ODT – Jasmine Couch, Anna Hodge, Glen Ross
PHOTOGRAPHER Chris Sullivan
VIDEOGRAPHER Joe Gallagher
COREFLUTE SIGNS Murray Davidson, Bruce McDowell
CALLBACKS ACTOR Sara Georgie Tunoka
CALLBACKS ACTOR Darrel Read
PRODUCTION ACCOUNTANT Rowena Monson
FUNDING MANAGER Bruce McDowell

For the NZ Musical Theatre Consortium (Mary Poppins)

ORIGINAL CHAIRPERSON: Kate Ghent
CURRENT CHAIRPERSON: Dale Henderson
PROJECT MANAGER: Jason Wade
FINANCE ADVISOR: Patrick Landrigan
LEGAL ADVISOR: Markham Lee
ACCOUNTANTS: BDO Taranaki
PRODUCTION DESIGN: John Harding
COSTUME DESIGN: Stephen Robertson
TECHNICAL MANAGER: Andrew Gibson
VISUAL REALISATION: David Spark – Pixel Productions
CONSULTING DIRECTORS: David Sidwell and Stephen Robertson
KEYBOARD PROGRAMMING: Richard Marrett
SET CONSTRUCTION: Scenic Solutions, Christchurch
COSTUME CONSTRUCTION: Originals – Court Theatre, Christchurch
 Additional – Pauline Laws, Albion – Christchurch, Cherie Cooke, Shirley Adam,
TOURING MECHANISTS: Andrew Gibson, Dave Gill, Andrew Hammond
TOURING WARDROBE MANAGER: Sarah Buchanan
TOUR MANAGEMENT: Jason Wade
TRANSPORTATION PROVIDED BY: Hooker Pacific/TIL Freight



CONSORTIUM PARTNERS:
 Blenheim Musical Theatre
 Hamilton Operatic Society
 Invercargill Musical Theatre
 Napier Operatic Society
 New Plymouth Operatic Society
 Porirua Little Theatre
 Rotorua Musical Theatre
 Taleri Musical Society
 Tauranga Musical Theatre



Previous Shows

1968 Revue 68
1969 Revue 69
1971 Revue 71
1972 Revue 72
1974 Golden Year of Musical Comedy
1975 Bless 'em All
1977 Free As Air
1978 Calamity Jane
1980 Grab me a Gondola
1981 Revue 81
1982 Revue 82
1983 Revue 83
1985 Time Scale Tapestry
1987 Salad Days
1988 Bob's Your Uncle
1989 Follow That Girl

1990 Naughty Marietta
1991 Carousel
1992 Brigadoon Variety Concert
1993 Oklahoma!
1994 Joseph and the Amazing Technicolor Dreamcoat
1995 Oliver!
1996 Springtime Variety Concert
1996 The King and I
1997 The Sound of Music
1999 Variety Concert
2000 Bugsy Malone
2001 Jesus Christ Superstar
2002 Joseph and the Amazing Technicolor Dreamcoat
2003 Eyes on the Stars

2004 Footloose
2005 Chess
2006 Annie
2007 Grease
2008 HONKI
2009 Buddy – The Buddy Holly Story
2010 Oliver!
2011 My Fair Lady
2012 Jesus Christ Superstar
2013 Les Misérables
2014 Mamma Mia!
2015 The Sound of Music
2015 Gourmet Broadway
2016 Grease: The Arena Spectacular

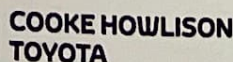
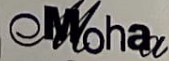
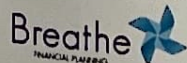
Acknowledgements

★ Adrian & Steph Olsen
 ★ Alex Campbell Menswear
 ★ Bendigo Valley Sports and Charity Foundation
 ★ BOC Gases – Joel Richan
 ★ Breathe Financial Planning – Barry Kloogh
 ★ Brocklebanks Dry Cleaners
 ★ Cooke Howlison
 ★ Coronation Hall Trust
 ★ Craigpine Ltd Winton
 ★ Cableways – Dave Lamont
 ★ Fuji Xerox
 ★ Hannah Molloy
 ★ Icon Logistics Dunedin
 ★ JD Souness Ltd Balclutha
 ★ Jo Stephens
 ★ Jonathon Usher
 ★ Kelvin Maker
 ★ Lamach Castle – Michelle Simpson & Deborah Price
 ★ Lee Tan
 ★ Logan Toomer
 ★ LOL Café – Wall Street Mall
 ★ Mainfreight Dunedin
 ★ Mitre 10 Mega – Allison Beck & Niel Finn-House

★ Moha Hair
 ★ Musical Theatre Dunedin
 ★ Musical Theatre New Zealand
 ★ NZME – The Hits Dunedin
 ★ Otago Community Trust
 ★ Otago Daily Times – Matthew Holdridge, Anna Hodge, Jasmine Couch
 ★ Penny Kershaw
 ★ Phil Ellis
 ★ Ratbags
 ★ Sarah Stevenson
 ★ Scenic Circle
 ★ Seen in Dunedin – Chris Sullivan
 ★ Site Weld
 ★ Sophie Morris
 ★ Speedy Signs
 ★ Strawberry Sound
 ★ The Fortune Theatre – Peter King
 ★ The Hits Promo Team – Logan Toomer
 ★ The Lion Foundation
 ★ The Trusts Community Foundation
 ★ TSA
 ★ United Scaffolding
 ★ Wall Street Mall



We apologise if, due to printing deadlines, we were unable to include any acknowledgements.
 Taleri Musical and DKCM Ltd sincerely thank everyone who has contributed to the success of this production.



PROUD TO BE
SUPPORTING
THE TAIERI
MUSICAL
AND DKCM
PRODUCTION
OF

MARY POPPINS

THE BROADWAY
MUSICAL



Find the right Toyota for you.

**CALL US TO ARRANGE
A TEST DRIVE. TODAY.**

FINANCIAL
SERVICES



VISIT COOKE.TOYOTA.CO.NZ TODAY.



TOYOTA

COOKE HOWLISON TOYOTA

500 Andersons Bay Rd, Dunedin. (03) 466 4166 www.cooke.toyota.co.nz

Breathe
FINANCIAL PLANNING



**You could fly away to
sunny Fiji!**
**Call 0508 123 555 and book
into our next seminar**

**Breathe life
into your
finances**



**Breathe Financial is delighted to be
supporting Taieri Musical and DKCM
in their production of Mary Poppins.**

www.breathefinancial.co.nz

A Disclosure statement is available on request and free of charge.

Callum & P

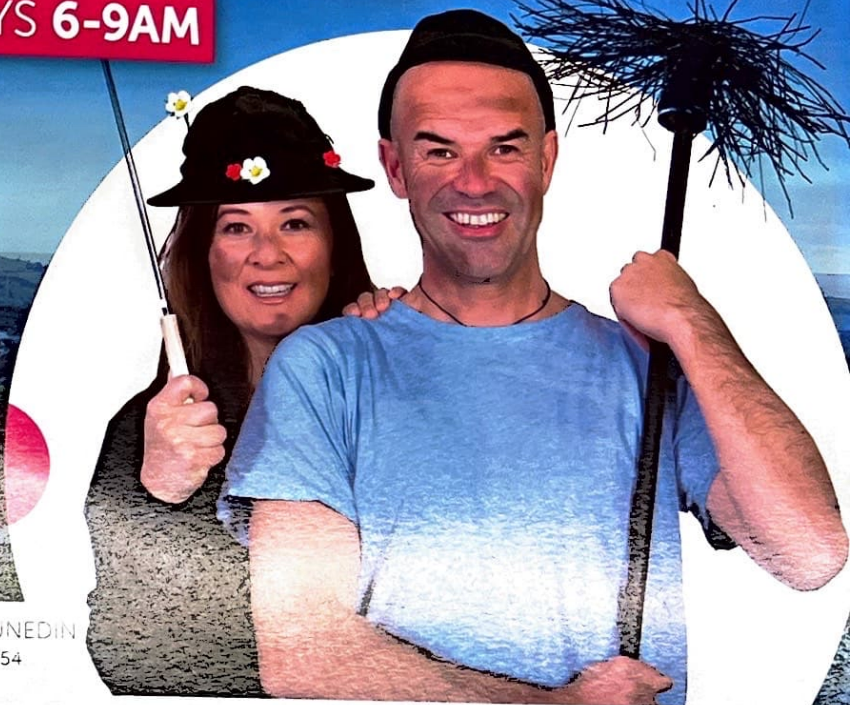
DUNEDIN'S #1 BREAKFAST SHOW*

WEEKDAYS 6-9AM

89.4
THE HITS
iHeartRADIO

SNAPCHAT THEHITSDUNEDIN | FACEBOOK THE HITS DUNEDIN

*Source: New Zealand Radio Survey T1 2017, Mon-Fri 6a-9a People 25-54



Every page, Anywhere.

Otago Daily Times e-edition.

Every ODT subscriber gets free access to the ODT e-edition - a convenient, exact replica of the newspaper in a digital format. You can view the ODT e-edition on your desktop, tablet, laptop and smartphone (Apple iOS & Android), whether you're at home, at work or relaxing on your well-deserved holiday.

To activate your ODT e-edition go to: www.subs.odt.co.nz

New subscribers can enjoy the ODT e-edition from only \$6 per week.

To sign up call our Circulation team on 03-479-3555 OR email circulation@alliedpress.co.nz



The Otago Daily Times are proud sponsors of the Mary Poppins production.

Otago Daily Times

Get closer to your community!



*In 2018 Taieri Musical will proudly
present a very special*



CELEBRATION

*Like us on Facebook for all of the official updates
and behind-the-scenes action.*